



Telequip®

***T-Flex™
User's Guide***



T-FlexTM

User's Guide

Copyright© Telequip® Corporation, 2005
Part # 350-019
Rev. 0805

Telequip® Corporation
5 Industrial Way
Salem, NH 03079

Telephone: 603-685-6999
Fax: 603-685-6997

www.telequip.com

Limitation of Liabilities

Telequip® has taken reasonable care in the preparation of this manual, and will not be liable for damages arising out of the use of this product or its documentation.

Software and Hardware Disclaimers

Proper operation and functionality of the T-Flex Coin Dispenser depends upon specific programming of the point of sale (POS) device or teller system software. Check with your software provider to ensure that the proper communications programming is in place to interface with the T-Flex Coin Dispenser.

Certain add-on hardware devices, such as serial expansion boards, may not pass the correct signals to the T-Flex, thereby causing unpredictable results.

FCC Statement

Changes or modifications to this unit not expressly approved by the party responsible for compliance could void the user's authority to operate the equipment.

This equipment has been tested and found to comply with the limits for a light industrial digital device, pursuant to Part 15 of the FCC Rules. These limits are designed to provide reasonable protection against harmful interference when the equipment is operated in a commercial environment. This equipment generates, uses, and can radiate radio frequency energy and, if not installed and used in accordance with the User Guide, may cause harmful interference to radio communications. Operation of this equipment in a residential area is likely to cause harmful interference in which case the user will be required to correct the interference at their own expense.

Trademarks

Product names used in this guide may be trademarks or registered trademarks of their respective companies.

Contents

| | |
|---|-----------|
| Limitation of Liabilities | <i>i</i> |
| Software and Hardware Disclaimers..... | <i>i</i> |
| FCC Statement | <i>i</i> |
| Trademarks | <i>i</i> |
| 1. Safety Warnings and Cautions | 1 |
| Safety Icons | 1 |
| Audience | 1 |
| Heavy Objects | 2 |
| 2. Preface | 3 |
| Introduction | 3 |
| International Capabilities | 4 |
| Related Documentation | 4 |
| 3. Warranty Coverage and Service | 5 |
| Technical Support 24/7 | 5 |
| How to Obtain Service..... | 6 |
| Packing the Coin Dispenser for Shipping..... | 6 |
| Shipping Charges | 6 |
| Repair Charges | 6 |
| 4. Getting to Know the T-Flex..... | 7 |
| Installation..... | 10 |
| Before You Begin..... | 10 |
| Factory Settings..... | 10 |
| Installing the Coin Dispenser..... | 11 |
| Changing the Dispense Direction | 11 |
| Employee Training | 12 |
| 5. Coin Dispenser Features | 13 |
| Dispensing Coins..... | 13 |
| Even Depletion and Minimum Dispense | 13 |
| Coin Capacity | 13 |
| Single Low Coin Alarm Mode | 14 |
| Dispense History | 14 |
| In System Programming..... | 14 |
| Lock Assembly | 15 |

| | |
|---|-----------|
| External Power Supply | 15 |
| Power Cable | 15 |
| Communications Cable | 15 |
| 6. Operation | 16 |
| Filling the Coin Canister | 16 |
| Coin Options | 16 |
| CLS - Canister Loading Solution Instructions..... | 17 |
| Reading the Calibration Strips | 18 |
| Additional Canisters | 18 |
| Cash Management Procedures | 19 |
| 7. Maintenance | 21 |
| Parts List..... | 22 |
| Mounting Options | 23 |
| Specifications | 23 |
| Canister Coin Capacities | 24 |
| US, Euro, UK | 24 |
| Canada, Japan, Australia | 25 |
| New Zealand, South Korea, Mexico, Poland, Turkey .. | 26 |
| 9. T-Flex Troubleshooting Flow Chart | 27 |

1. Safety Warnings and Cautions

The T-Flex Coin Dispenser is a safe product. All the necessary precautions have been taken to ensure that normal operations and maintenance procedures are safe.

Telequip Corporation will not be held liable for damages and/or personal injuries brought on by incorrect operation and maintenance practices.

Only a qualified service technician should remove the front or rear covers to access internal components. Ignoring this warning may void the products warranty.

Safety Icons



Electrical Shock Hazards - Indicates potentially lethal voltages are present.



Stop! - Identifies important information requiring special attention.



Caution! - Identifies actions requiring caution.



Pinch Hazard - Identifies possible pinch hazards.

Audience

The *Telequip T-Flex User's Guide* is intended for managers and supervisors of businesses that use the Telequip T-Flex Coin Dispenser. It describes features of the unit, discusses how to perform standard operations, and how to perform troubleshooting procedures to solve common problems.

Heavy Objects



Caution: *The T-Flex Coin Dispenser weighs approximately 10.5 pounds including an unfilled coin canister. When transporting the unit, avoid bumping or dropping it, which could damage the unit. If dropped on a body part, the coin dispenser could cause serious personal injury.*



Caution: *The canister should be removed from the dispenser and transported separately to avoid damage and/or personal injury.*



Caution: *A non-secured unit must be placed on a level surface to assure optimum stability.*



Caution: *A canister that is full of coins is quite heavy. Be careful in handling the canister to avoid damage to the unit or to your person. Always store the canister flat on its back or in a vertical position on its base on a smooth, flat surface.*

2. Preface

Thank you for purchasing the T-Flex Coin Dispenser. Using a coin dispenser can save six or more seconds on each cash transaction. Saving time translates directly into increased sales, especially during peak business periods. And, with a coin dispenser, your employees will have more time to pay attention to your customers rather than counting out change. Using a coin dispenser provides greater accuracy and fewer cash discrepancies.

Introduction

The T-Flex Coin Dispenser is a versatile, heavy-duty product that is engineered to provide years of trouble-free operation. Supermarkets, convenience stores, quick serve restaurants, cafeterias, banks, and casinos that use coin dispensers have seen improved customer throughput, increased cashier productivity, and greater customer satisfaction.

Telequip also provides customized coin dispensing automation technology that can be integrated into self-checkout and kiosk-type solutions. Telequip is the coin dispenser supplier of choice for self-checkout systems that have been installed in top retailing companies.

Using microprocessor-based technology, fault protection circuitry, and few moving parts, the T-Flex is a very reliable device. The circuit board is immune to light industrial electrical interference and is tolerant of “dirty power” environments. The T-Flex Coin Dispenser has received a “CE” marking, a stringent European certification that pertains to safety and environmental standards.

The T-Flex uses either an RS-232 or USB (ver 1.1) communications interface, making it easy to integrate into environments using cash registers and point of sale (POS) devices as well as into self-checkout kiosk-type systems.

PC-based software allows you to easily configure options, set customized features, and run diagnostic tests that were previously available only through hardware upgrades or manually setting switches on the circuit board.

International Capabilities

The T-Flex can be used in various countries by selecting the appropriate power cord and canister. Canisters are currently available for the following types of coins:

| | | |
|-------------|-------------|-----------|
| US | Euro | UK |
| Canada | Japan | Australia |
| New Zealand | South Korea | Mexico |
| Poland | Turkey | |

Check www.telequip.com or with your Telequip representative for any updates.

The T-Flex Coin Dispenser has received CE marking and is approved for distribution in the European market. Design features include:

- External switch mode power supply allows the dispenser to operate from either 120 or 240 volts AC, 50 or 60 Hz
- Detachable power cord that can be ordered with different connectors to match the local power source

Related Documentation

The *Telequip T-Flex Service Guide* is available for service technicians who work with the Telequip T-Flex Coin Dispenser. It describes how to run diagnostic tests, change the default settings for pre-programmed functions, perform advanced troubleshooting procedures, and replace various components and sub-assemblies.

3. Warranty Coverage and Service

Telequip warrants that the T-Flex Coin Dispenser, if properly handled, installed and used, will be free from defects in material and workmanship for one (1) year following the date of shipment by Telequip. An extended warranty is available for the T-Flex Coin Dispenser. This warranty is available for two additional years. For specific information on this extended warranty, please contact your sales representative at Telequip or your POS provider.

If the T-Flex Coin Dispenser fails to conform to the above express warranty, Telequip's sole and exclusive liability will be to repair the coin dispenser that fails during the applicable warranty period, provided that:

- You promptly notify Telequip (603-685-6999) that the T-Flex Coin Dispenser is defective and provide a description of the deficiency.
- You return the T-Flex Coin Dispenser to Telequip's facility at your risk and expense.

Telequip is satisfied that the claimed deficiency exists and was not caused by accident, misuse, neglect, alteration, improper installation, improper testing or repair. If the returned T-Flex Coin Dispenser is defective, transportation charges for the return of the repaired unit to the customer will be assumed by Telequip.

Technical Support 24/7

To obtain technical support, you can contact Telequip by telephone, fax or e-mail. The telephones are staffed 24 hours a day, 7 days a week. Please call 603-685-6999 Ext. 131. Additional information can be found on our web site at www.telequip.com.

Fax your questions to us at 603-685-6997 or send e-mail to service@telequipcorp.com. Our technical support team will get the information you need as quickly as possible.

How to Obtain Service

Your T-Flex Coin Dispenser is a rugged and reliable piece of equipment that was designed to provide years of trouble-free operation. In the event your T-Flex requires service, please contact Telequip Corporation to receive a Return Material Authorization (RMA) number. Please call us during our normal business hours (Monday through Friday, 8:00 a.m. - 5:00 p.m., Eastern Time) at 603-685-6999, Ext. 131.

When you call, please have the following information ready:

- The coin dispenser's serial number, which is printed on a silver label located on the bottom of the unit and on the face of the canister loading slot
- The type of Point of Sale (POS) device or teller system used with the unit
- A description of the problem

Packing the Coin Dispenser for Shipping

Before packing the coin dispenser, remove the coin cup and the canister. Pack the coin dispenser, canister, and communications cable in a sturdy container, with sufficient packing material to prevent them from being damaged.

Shipping Charges

You are responsible for the shipping charges and risk for returning the coin dispenser. Telequip suggests that you use a shipping service that provides tracking information, and that you insure the equipment for its full value.

Repair Charges

If Telequip is satisfied that the claimed deficiency exists, and your T-Flex Coin Dispenser is within the specified warranty period, Telequip's sole and exclusive liability is to repair it. Units repaired under warranty are returned to the customer at Telequip's expense. Abuse, neglect, alteration, improper installation, or improper testing and repair of the unit will void the warranty.

For Telequip coin dispensers that are out of warranty, repairs are completed at a flat charge plus the cost of parts and shipping.

4 Getting to Know the T-Flex *(See Figures I – II)*

The following drawings identify the major parts of the T-Flex Coin Dispenser:

Figure I

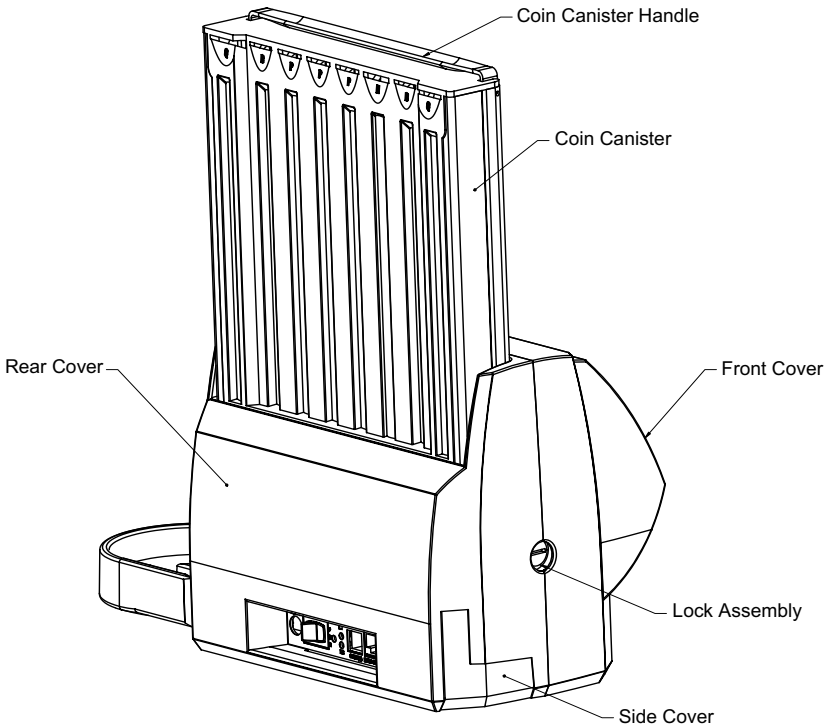
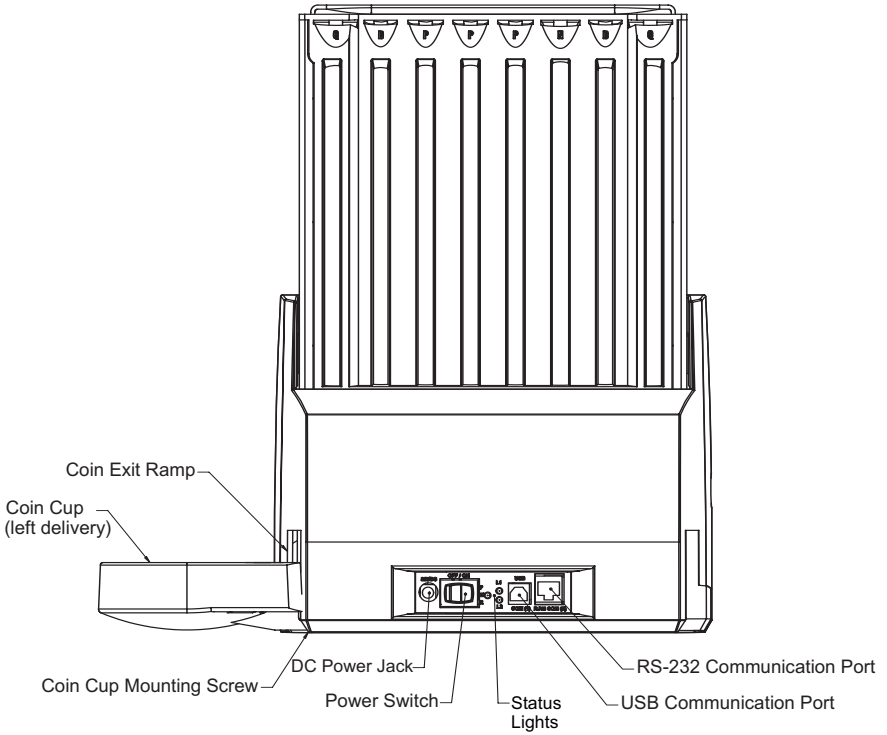


Figure II



Coin cup - Holds dispensed coins. Left and right coin cups are available. Refer to “Installing the Coin Dispenser” instructions for installing the coin cup.

Left/Right coin delivery - Coins can be dispensed either from the left side or the right side of the unit. For reference, the right side of the coin dispenser is the side on which the lock assembly is mounted.

Rear cover - Encloses the rear of the chassis, and typically faces the cashier.

Front cover - The cover on which the Telequip logo appears, and usually faces the customer. The front cover provides access to various mechanical and electrical assemblies. Only an authorized service technician should remove the cover.

Coin canister - Contains the coin inventory. Coin canisters are available in models that support several types of coins. Refer to “Specifications” for more information. The US coin canister includes a see-through, removable cover.

Communication ports - USB and RS-232 serial interface which connects to the point of sale device or terminal.

Status lights:

Green (constant) - power LED. Reports when the device is on and ready.

Red (constant) - warning LED. Reports a machine error.

Red (blinking) - warning LED. There are one or more low coin columns.

Yellow (blinking) - communication LED. Flashes briefly when valid RS-232 or USB data communications are passed to or from the host.

DC power jack - Receptacle into which the power cable is inserted.

Power switch - Powers the coin dispenser on and off.

Side cover - Covers the unused opening and directs the coin exit ramp. The side cover is installed opposite of the coin cup.

Lock assembly/key - Secures the coin canister to the chassis, preventing it from being removed. The key is universal to other T-Flex Coin Dispenser locks. Custom locks are available for an additional charge. The lock is for security only, and is not required for operation.

Installation

Before You Begin

Before you install the T-Flex, check the area where it will be located, keeping the following points in mind:

- Typically, the coin dispenser should be installed so that the front cover (with logo) is facing the customer and the rear is facing the cashier.
- The coin cup should be installed on the side where it is readily accessible to either the customer or the cashier, depending on your operational preference.
- The surface should be level, stable, and free of liquids and moisture.
- The coin dispenser should not be installed where there are vapors or condensation, and where it might be accidentally splashed or sprayed with liquids. Liquids can create a shock hazard and will cause damage to the internal components of the unit, voiding the warranty.



Factory Settings

The T-Flex is configured at the factory according to the customer's specific requests. The following standard options are programmed, unless otherwise specified:

- “Even Depletion” of coins (versus “minimum dispense”)
- US standard coin canister
- USB HID device
- low coin alarm enabled
- low coin sound enabled

The procedures to change these options are described in the *Tequip T-Flex Service Guide*. Contact your service provider for assistance.

Installing the Coin Dispenser

To install the coin dispenser, perform the following steps:

1. Set the coin dispenser on a flat, stable surface.
2. Assemble the coin cup by placing it into the hole on the side of the dispenser and align it to the exit ramp. Attach the tab to the underside of the chassis with the Phillips-head screw provided.
3. Plug the connector on the communications cable, labeled “Coin Disp”, into the appropriate USB or RS-232 communications port.
4. Attach the other end of the communications cable to the POS/teller system.
5. Plug the DC power plug from the external power brick into the DC power jack.6.5 plug and the AC line cord into the external power supply.
6. Insert a filled coin canister into the coin dispenser, seating it firmly into place. Fill the canister to at least one third capacity in order to test it during the installation.

If the level of any coin column drops below the bottom of the calibration strips, the low-coin alarm will sound.

7. Plug the line cord into a suitable power outlet.
8. Press the power switch to the “On” position.
The coin dispenser is ready to use.

Changing the Dispense Direction

To change the side from which the coin dispenser ejects coins, perform the following steps:

(Note: As a point of reference, the right side of the coin dispenser is the side on which the lock assembly appears.)

1. Unplug the power cable.
2. Disconnect the communications cable.



3. Remove the original coin cup and the original side cover.
4. In the opening which the original cup was attached, locate the end of the coin ramp, and lift it up so that the ramp tilts towards the opposite direction. Slide the new side cover into the opening, ensuring that it locks the end of the coin ramp into the correct position.
5. Secure the side cover with the Phillips-head screw.
6. On the opposite side of the coin dispenser, install the new cup. Ensure that the cup is properly aligned with the dispenser, and then secure the cup to the bottom of the chassis using the Phillips-head screw.

Employee Training TIPS

To integrate the T-Flex Coin Dispenser smoothly into your operation, consider an employee training class. This will help employees become familiar with the coin dispenser and give them the opportunity to ask questions. Topics you should cover are:

- Point out the coin dispenser's features (refer to "Getting to Know the T-Flex")
- Emphasize that the covers to the unit should never be removed
- Advise caution in removing and handling the coin canister, which can be quite heavy
- Ensure that the coin dispenser is placed on a level/sturdy surface, free of liquid and/or moisture
- Demonstrate the different methods to fill the coin canister (a video on filling the canister is available on request from Telequip)
- Describing what to do when the low coin alarm sounds (see "Single Low Coin Alarm Mode")

5. Coin Dispenser Features

Dispensing Coins

The T-Flex Coin Dispenser dispenses change for a transaction, saving time and ensuring accuracy. The unit can be adjusted to eject coins from either the left or right side. Refer to ‘Changing the dispense direction’.

Even Depletion and Minimum Dispense

To maximize the number of transactions that can be completed before refilling the coin canister, the T-Flex Coin Dispenser is set to dispense coins using the “even depletion” method. This method occasionally substitutes coins (for example, instead of a quarter, two dimes and one nickel are dispensed) assuring that the entire coin inventory is depleted more evenly. In practice, even depletion offers an additional 30 to 70 transactions between canister fills.

The minimum dispense method ejects the minimum number of coins possible per transaction (for example, to return 50 cents, two quarters are dispensed).

Your service technician can set your coin dispenser for either option with the Configure and Test Application, as described in the *T-Flex Service Guide*.

Coin Capacity

The T-Flex US Standard coin canister holds more than \$110 in coins, distributed between eight columns. There are two quarter, two dime, one nickel and three penny columns. Each column holds up to three rolls of coins.

The high capacity of the T-Flex coin canister assures more transactions between refills. A single US Standard canister can last between 2-3 hours in a high volume sales setting.

The time between fills will vary, depending on your particular environment. You can perform your own calculations by using the following information:

- Assume an average transaction dispenses 50 cents
- Divide the amount of the coin inventory (in this example, a US Standard coin canister with over \$100 in coins) by 50 cents, which yields over 200 transactions per canister
- Determine how many transactions per hour are conducted in your operation (for this example, we use 70 transactions)
- Divide the 200 transactions per filled canister by 70 transactions per hour, which yields 2.7 hours per canister

This example assumes the even depletion option, which is the factory-standard setting.

Single Low Coin Alarm Mode

When any column of coins in the canister drops below a certain level, the low coin alarm will sound. After the alarm sounds, three more dispenses are allowed before the machine stops dispensing coins. To silence the alarm, turn the power switch off. Refill the coin dispenser or remove the depleted canister and replace it with a filled one, and then turn the power back on.

When the first column reports a low coin condition, the red LED will start to flash and the alarm will sound every 10 seconds. The dispenser will continue to operate until the coin inventory nearly reaches the equivalent of the ‘dispense below value’. After this has been reached, the red LED will turn solid and the alarm will change to a constant tone.

Dispense History

An accumulated history of coins dispensed is stored in volatile memory. A separate count is stored for each column. History can be cleared by cycling power or issuing a reset command.

In System Programming

Firmware upgrades can be flashed directly through the RS-232 or USB port with use of a Telequip upgrade utility.

Lock Assembly

The T-Flex Coin Dispenser includes a lock assembly that secures the coin canister in place. The key is universal and can be used with any T-Flex Coin Dispenser. Custom locks are available from Telequip for an additional charge. The lock is for security only, and is not required for operation.

External Power Supply

The T-Flex coin dispenser is supplied with a UL listed 32V, 70W external switch mode power supply. Only UL listed supplies with similar ratings may be used to power the T-Flex dispenser.

Power Cable

The cable that connects the coin dispenser to the source of electrical power is detachable, and available in several terminations to match local power receptacles. Contact Telequip for additional information.

Communications Cable

RS- 232 - A standard RS-232 serial cable is used to connect the T-Flex Coin Dispenser to the point of sale (POS) device or teller system. The cable end that plugs in to the coin dispenser is terminated with an RJ-45 connector.

The other end of the cable is typically fitted with a DB-9 female connector, however, other connectors may be requested when placing an order.

USB - A USB ver 1.1 Standard A to B cable is used to connect the T-Flex Coin Dispenser to the point of sale (POS) device or teller system

6. Operation

This section describes operations loading the coin canister, reading how much currency is in a coin canister, and cash management procedures.

Filling the Coin Dispenser



Before you remove the coin canister, press the power switch to the “Off “ position. If the coin dispenser is switched on when the coin canister is removed, one of the solenoids may fire, causing a pinch hazard and/or personal injury.

Filling a coin canister takes approximately five minutes, but may take longer with initial use. Either rolled or loose coins can be used to fill the canister. Knowing the value of the rolled coins that you add makes it easier to count the total value of coins when the canister is filled.

Coin Options

Perform the following steps to load the canister using loose coin.

Two additional loading methods are available:

1. EZ fill method (refer to the quick reference card for using rolled coin) or
 2. Use the CLS device to rapidly fill the canister with loose coin (see Canister Loading Solutions Instructions).
1. Remove the canister from the base.
 2. Set the canister on a flat, stable surface, and fold the carrying handle underneath, providing a good load angle.
 3. Remove the canister cover by compressing the two thumb points at the bottom of the canister and sliding the cover up and off.
 4. Take a comfortable amount of coins between your thumb and first finger.
 5. Place the column of coins over the top of the column, and then let it slide down into the column. Repeat this process until the canister is filled to the desired starting level.
 6. Place the cover back on the canister.

CLS - Canister Loading Solution Instructions

USA Version

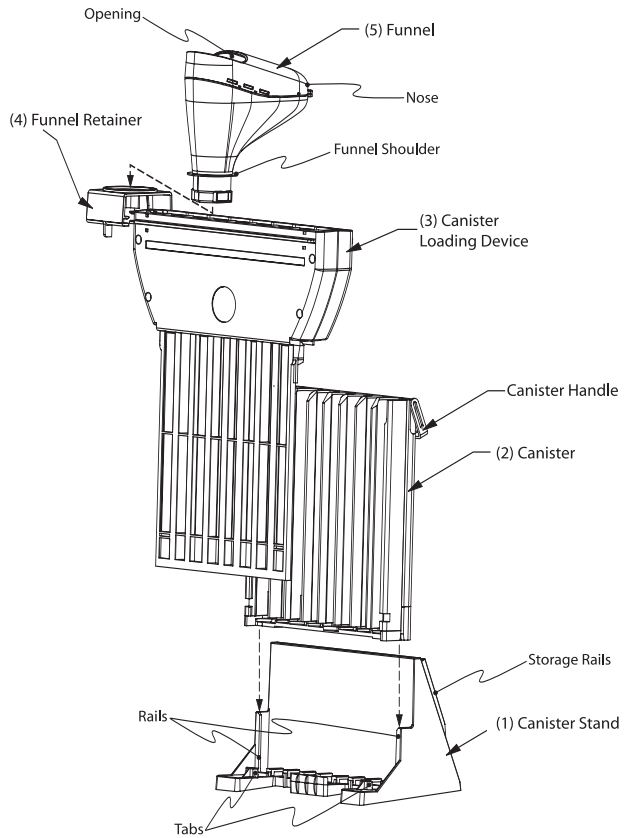
1. Remove the clear plastic canister cover by depressing the two tabs at the bottom and sliding up. The canister handle should hang toward the back of the canister.

2. Set the canister stand (1) on a flat surface. Assemble the canister (2) to the stand by sliding it down onto the two rails.

3. Attach the canister loading device (3) to the canister by lowering the device onto the canister, engaging the top rear of the canister, then pivoting the bottom of the loading device inward to engage the front of the canister. Slide the device down until it engages the tabs at the base of the canister stand.

4. If the funnel retainer (4) is not already assembled onto the loading device, slide it onto the two rails at the top of the loading device. It will only assemble one way. When assembled properly, the funnel retainer will not slide off the loading device.

5. Assemble the funnel (5) to the funnel retainer by dropping the funnel onto the retainer with the slots aligned. Rotate the funnel 1/4 turn clockwise, positioned with the opening in the front and “nose” in the back.



6. To position the funnel over the corresponding denomination, lift the funnel slightly and slide the funnel and retainer until positioned over the appropriate column. Drop the funnel in place. The shoulder of the funnel should be flush with the retainer.

7. Begin loading coins for that denomination by slowly pouring coins into the funnel either by hand, cup or directly from the coin bag. Continue filling until that column is filled to the desired height indicated by the calibration strips on the canister.

8. Repeat this process for each denomination.

9. To remove the loading device, rotate the funnel turn counter-clockwise and pull upward to disengage from the funnel retainer. Slide the loading device upward to disengage from the bottom tabs of the canister stand. Swing the bottom device out and up to completely disengage.

10. Re-assemble the clear plastic cover to the canister. Using the handle, slide the canister upward to remove from the stand. The loading device is stored by sliding it into the storage rails on the back of the stand.

Reading the Calibration Strips

The calibration strips at the back of the coin columns are used to determine the approximate value of the coins in each column. Due to variations in coin thickness and how the coin rims align when they are stacked, the values indicated by the calibration strips may be off by a small amount - one to three coins at most – at the uppermost level of the columns.

The correct way to use the calibration strips is to read the first fully visible number that appears above a column of coins.

Additional Canisters

Many businesses purchase extra coin canisters to improve efficiency. A filled canister can be quickly swapped with a depleted canister with minimal impact to the operation.

Several models of coin canisters are available that hold coins used by the United States, Canada, and several European countries. Refer to “Parts List” for details.

Cash Management Procedures

Customers find that using a coin dispenser improves their cash management practices. By filling the coin canister to a fixed level, and keeping it assigned to the safe balance for accounting purposes, you can minimize the counting and handling of coins.

The following procedure describes one method to manage your cash balances:

1. Decide the value of coins that you want to assign to the canister and then fill it with that amount (for example, \$100.50 US).
2. Using an indelible ink pen, mark the canister extrusion to indicate the level of coins in each column.
3. At the start of the shift, issue the cashier a drawer with a predetermined amount of bills (for example, \$80 US) and then lock a filled coin canister into the dispenser.

As sales are rung up, the total value of bills in the drawer increases by the amount of the sales plus the value of coins dispensed. This is because the coins are part of the safe balance instead of the drawer balance.

4. Periodically inventory and remove excess bills from the register as you normally would.
5. When the shift is over, take a sales reading, and remove the cash drawer from the register. Add any coins from the drawer to the coin canister (but not above the marked refill level), and then remove the coin canister from the dispenser.
6. Using the calibration strips, count the value of coins remaining in the canister (for example, \$60 US) and subtract the total from the amount initially loaded into the canister (\$100.50 US). This yields the value of coins dispensed (\$40.50 U in this example).

7. Calculate the total sales rung in during the shift. The sales total should equal the combined value of funds received and the coins dispensed.

For example, if sales totaled \$800 US, and \$40 US in coins was dispensed, the cash drawer should contain \$920 US. That is, the starting balance in the drawer, plus the bills taken in from sales, plus the amount of coins dispensed.

Be sure to allow for a slight cash variance due to coin rim thickness and uneven stacking. If each column in a US Standard canister is off by one or two coins, the total value of coins in the canister, as indicated by the calibration strips, can vary up to \$1.56 US.

7. Maintenance

- The T-Flex Coin Dispenser is designed to be low maintenance. The canister should be handled with care and never dropped. Always store the canister flat on its back or in a vertical position on its base on a smooth flat surface.

It is important to keep the coin dispenser and the canister clean. Use only a soft, damp cloth to remove surface dirt.



The unit does NOT need to be oiled. Using oil, detergents or petroleum-based cleaning compounds can adversely affect the reliability of the coin dispenser.

Parts List

| Bowl Coin Cup and Side Cover | Part Number |
|-------------------------------------|-----------------------|
| Left, Grey | 310-381L and 310-364G |
| Right, Grey | 310-381R and 310-365G |
| Left, Charcoal | 310-381L and 310-364C |
| Right, Charcoal | 310-381R and 310-365C |

| Coin Cups | Part Number |
|------------------|--|
| Black | 310-381RB (right) and 310-381LB (left) |
| Grey | 310-381RG (right) and 310-381LG (left) |
| Dark Grey | 310-381RD (right) and 310-381LD (left) |
| Standard | 310-381R (right) and 310-381L (left) |

| Coin Canister | Maximum Capacity | Part Number |
|----------------------|-------------------------|--------------------|
| US Standard | \$111.42 | 340-464 |
| US High Capacity | \$128.91 | 340-441 |
| US Golden Dollar | \$316.48 | 340-406 |
| Canadian | \$483.44 | 340-405 |
| United Kingdom | 361.20 £ | 340-404 |
| Euro | 398.16 Euro | 340-450 |
| Japan Standard | 108893 Yen | 340-520 |
| Australia | \$472.20 | 340-460 |
| Turkey | 432.56 Lira | 340-596 |
| Poland | 338.50 Grosz | 340-554 |
| New Zealand | \$253.60 | 340-560 |
| South Korea | 114510 Won | 340-555 |
| Mexico | 2223.00 Pesos | 340-559 |

Contact Telequip Corporation for information about coin canisters for other countries.

Calibration Strips

Available for the coin canisters listed above

| Canister Covers: | Part Number |
|--------------------------|--------------------|
| US Coin Canister Cover | 310-471 |
| Universal Canister Cover | 310-384 |
| US Tall Canister Cover | 310-434 |

Contact Telequip Corporation for information about covers for other coin canisters.

| Coin Loaders: | Part Number |
|--|--------------------|
| Coin Loading Solution (CLS) for US Canisters | 340-517 |
| Coin Loading Solution (CLS) for UK Canisters | 340-515 |
| Keys | 340-314S |

Mounting Options

Stainless steel bracket that allows dispenser to be secured to counter top with four bolts coming down from the top
340-463

Steel bracket that allows dispenser to be secured to counter top with one bolt coming up from underneath
310-542 (Bracket) 340-526 (kit, mounting hardware)

Standoffs that allow dispenser to be secured to counter with four bolts coming up from underneath.
330-036

Specifications

Note: *Specifications and design features are subject to change without notice.*

Size: 9-3/4" W x 6-1/2"D x 14-1/2"H – with canister
 9-3/4" W x 6-1/2"D x 7-3/4"H – without canister

Weight: 6.5 lbs. - without canister

Power: 32 Volt DC, 4 Amps max.
 120 to 240 VAC, 50 or 60 Hz 32V external
 switch mode power supply

Power Consumption:
 70W

Power Cord: Detachable power cords with different terminations to match local power receptacles, and in different lengths, are available.

Communication Cable:
 Cables with various serial cable terminations and in different lengths are available.

Certifications: CE, UL, CUL, FCC

Operating Temperature Range: 0° - 40° C

Humidity Range: +0 to 80% RH and non-condensing

Canister Coin Capacities

US

| US Standard (340-464) | | | US Tall (340-441) | | | US \$1 (340-406) | | |
|------------------------|-----------|---------|------------------------|-----------|---------|------------------------|-----------|---------|
| Denomination | # Columns | # Coins | Denomination | # Columns | # Coins | Denomination | # Columns | # Coins |
| 1 Cent | 3 | 462 | 1 Cent | 3 | 531 | 1 Cent | 2 | 308 |
| 5 Cent | 1 | 120 | 5 Cent | 1 | 138 | 5 Cent | 1 | 120 |
| 10 Cent | 2 | 348 | 10 Cent | 2 | 402 | 10 Cent | 1 | 174 |
| 25 Cent | 2 | 264 | 25 Cent | 2 | 306 | 25 Cent | 2 | 264 |
| | | | | | | \$ 1 | 2 | 224 |
| Total: \$111.42 | | | Total: \$128.91 | | | Total: \$316.48 | | |

Euro

| Euro Standard (340-450) | | | Euro Tall (340-499) | | | Euro > 5 (340-479) | | |
|-------------------------|-----------|---------|-----------------------|-----------|---------|-----------------------|-----------|---------|
| Denomination | # Columns | # Coins | Denomination | # Columns | # Coins | Denomination | # Columns | # Coins |
| 1 Cent | 1 | 137 | 1 Cent | 1 | 159 | 1 Cent | 0 | 0 |
| 2 Cent | 1 | 135 | 2 Cent | 1 | 157 | 2 Cent | 0 | 0 |
| 5 Cent | 1 | 137 | 5 Cent | 1 | 157 | 5 Cent | 2 | 274 |
| 10 Cent | 1 | 117 | 10 Cent | 1 | 135 | 10 Cent | 2 | 234 |
| 20 Cent | 1 | 106 | 20 Cent | 1 | 122 | 20 Cent | 1 | 106 |
| 50 Cent | 1 | 95 | 50 Cent | 1 | 109 | 50 Cent | 1 | 95 |
| €1 | 1 | 97 | €1 | 1 | 113 | €1 | 1 | 97 |
| €2 | 1 | 104 | €2 | 1 | 120 | €2 | 1 | 104 |
| Total: €396.32 | | | Total: €457.98 | | | Total: €410.80 | | |

UK

| UK Standard (340-404) | | | UK Tall (340-507) | | | UK <£2 (340-475) | | |
|-----------------------|-----------|---------|-----------------------|-----------|---------|-----------------------|-----------|---------|
| Denomination | # Columns | # Coins | Denomination | # Columns | # Coins | Denomination | # Columns | # Coins |
| 1 Penny | 1 | 138 | 1 Penny | 1 | 159 | 1 Penny | 1 | 138 |
| 2 Pence | 1 | 116 | 2 Pence | 1 | 133 | 2 Pence | 1 | 116 |
| 5 Pence | 1 | 134 | 5 Pence | 1 | 155 | 5 Pence | 1 | 134 |
| 10 Pence | 1 | 123 | 10 Pence | 1 | 142 | 10 Pence | 1 | 123 |
| 20 Pence | 1 | 130 | 20 Pence | 1 | 151 | 20 Pence | 1 | 130 |
| 50 Pence | 1 | 127 | 50 Pence | 1 | 148 | 50 Pence | 2 | 254 |
| £1 | 1 | 71 | £1 | 1 | 82 | £1 | 1 | 71 |
| £2 | 1 | 89 | £2 | 1 | 104 | £2 | 0 | 0 |
| Total: £361.20 | | | Total: £420.40 | | | Total: £246.70 | | |

Canister Coin Capacities

CANADA

| Canada Standard (340-405) | | | Canada Tall (340-508) | | |
|---------------------------|-----------|---------|------------------------|-----------|---------|
| Denomination | # Columns | # Coins | Denomination | # Columns | # Coins |
| 1 Cent | 2 | 304 | 1 Cent | 2 | 350 |
| 5 Cent | 1 | 130 | 5 Cent | 1 | 152 |
| 10 Cent | 1 | 194 | 10 Cent | 1 | 225 |
| 25 Cent | 2 | 290 | 25 Cent | 2 | 336 |
| \$1 | 1 | 118 | \$1 | 1 | 137 |
| \$2 | 1 | 132 | \$2 | 1 | 153 |
| Total: \$483.44 | | | Total: \$560.60 | | |

JAPAN

| Japan (340-520) | | | Japan Tall (340-454) | | |
|----------------------|-----------|---------|-----------------------|-----------|---------|
| Denomination | # Columns | # Coins | Denomination | # Columns | # Coins |
| ¥ 1 | 2 | 302 | ¥ 1 | 2 | 338 |
| ¥ 5 | 1 | 151 | ¥ 5 | 1 | 167 |
| ¥ 10 | 1 | 151 | ¥ 10 | 1 | 167 |
| ¥ 50 | 1 | 131 | ¥ 50 | 1 | 145 |
| ¥ 100 | 2 | 270 | ¥ 100 | 2 | 298 |
| ¥ 500 | 1 | 124 | ¥ 500 | 1 | 138 |
| Total: ¥98117 | | | Total: ¥108893 | | |

AUSTRALIA

| Australia (340-460) | | |
|------------------------------|-----------|---------|
| Denomination | # Columns | # Coins |
| 1 Cent | 1 | 172 |
| 5 Cent | 2 | 254 |
| 10 Cent | 2 | 196 |
| 50 Cent | 0 | 0 |
| 1 Dollar | 1 | 87 |
| 2 Dollars | 2 | 156 |
| Total: 472.20 Dollars | | |

Canister Coin Capacities

NEW ZEALAND

| New Zealand (340-560) | | |
|--------------------------------|-----------|---------|
| Denomination | # Columns | # Coins |
| 5 Cent | 2 | 344 |
| 10 Cent | 2 | 264 |
| 20 Cent | 2 | 200 |
| 50 Cent | 0 | 0 |
| \$1 Dollar | 2 | 170 |
| \$2 Dollars | 0 | 0 |
| Total: \$253.60 Dollars | | |

SOUTH KOREA

| South Korea (340-555) | | |
|------------------------------|-----------|---------|
| Denomination | # Columns | # Coins |
| 1 Won | 0 | 0 |
| 5 Won | 0 | 0 |
| 10 Won | 3 | 456 |
| 50 Won | 1 | 145 |
| 100 Won | 3 | 432 |
| 500 Won | 1 | 116 |
| Total: 114510 Won | | |

MEXICO

| Mexico (340-559) | | |
|----------------------------|-----------|---------|
| Denomination | # Columns | # Coins |
| 5 Cent | 0 | 0 |
| 10 Cent | 1 | 165 |
| 20 Cent | 1 | 150 |
| 50 Cent | 1 | 133 |
| 1 Peso | 2 | 276 |
| 2 Peso | 1 | 127 |
| 5 Peso | 1 | 116 |
| 10 Peso | 1 | 100 |
| Total: 2223.00 Peso | | |

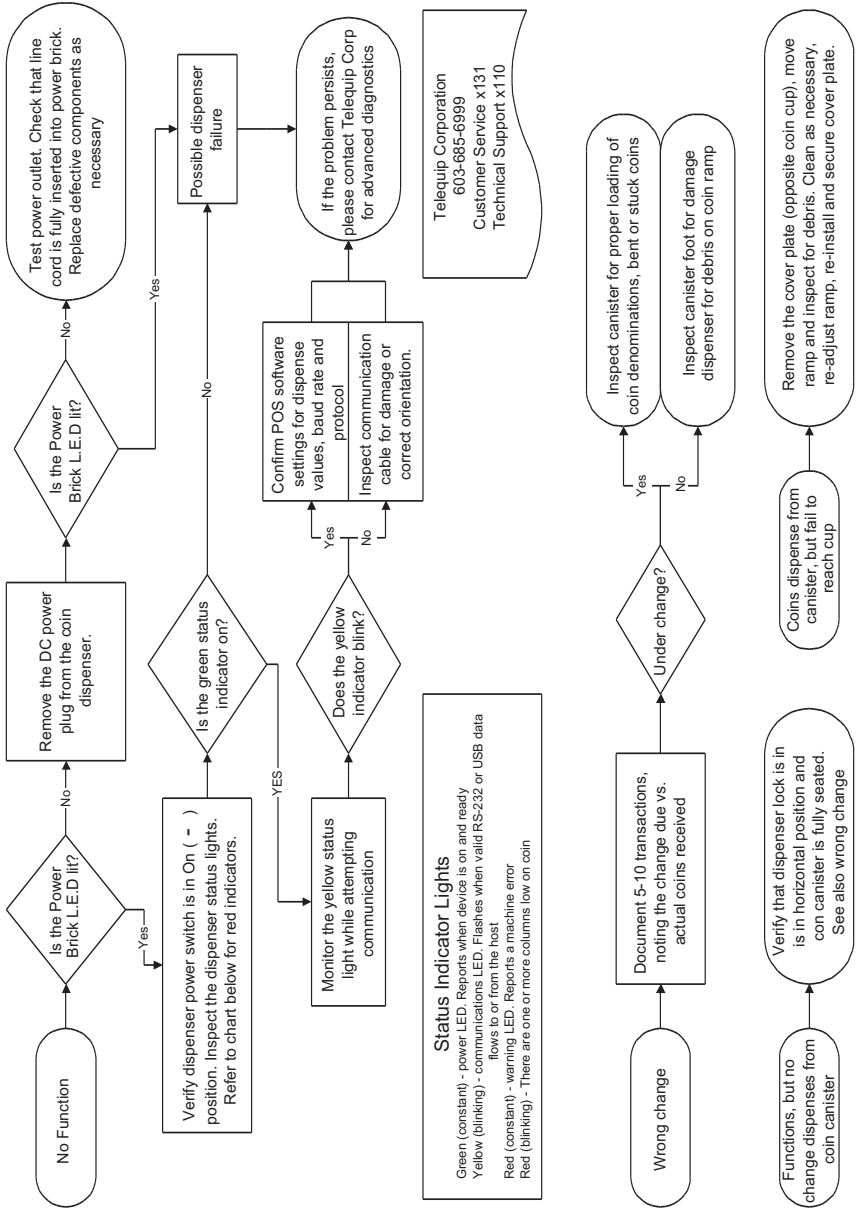
POLAND

| Poland (340-554) | | |
|----------------------------|-----------|---------|
| Denomination | # Columns | # Coins |
| 1 Grosz | 1 | 164 |
| 2 Grosz | 0 | 0 |
| 5 Grosz | 1 | 164 |
| 10 Grosz | 1 | 135 |
| 20 Grosz | 0 | 0 |
| 50 Grosz | 1 | 135 |
| 1 Zloty | 2 | 270 |
| 2 Zloty | 1 | 115 |
| 5 Zloty | 1 | 115 |
| Total: 338.50 Grosz | | |

TURKEY 3L

| Turkey 3L (340-596) | | |
|----------------------------|-----------|---------|
| Denomination | # Columns | # Coins |
| 1 Kuruş | 1 | 136 |
| 5 Kuruş | 1 | 136 |
| 10 Kuruş | 1 | 129 |
| 25 Kuruş | 1 | 116 |
| 50 Kuruş | 1 | 111 |
| 1 Lira | 3 | 327 |
| Total: 432.56 Lira | | |

9. T-Flex Troubleshooting Flowchart



Notes:



Telequip Corporation

5 Industrial Way
Salem, NH 03079

Telephone: 603-685-6999

Fax: 603-685-6997

www.telequip.com